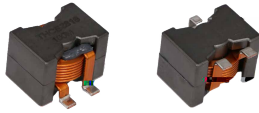


THCE Series

SMD High Current Inductor

Size 2818



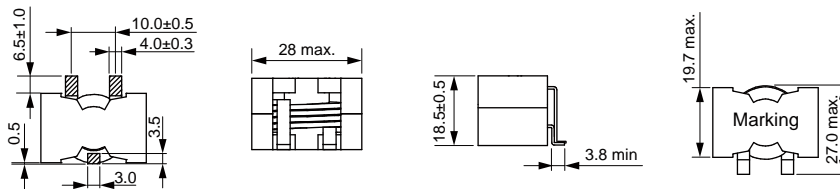
CHARACTERISTICS

- High saturation current up to 100A
- Low losses with flat wire design
- Low core losses with MnZn core material
- Quantity: 40pcs

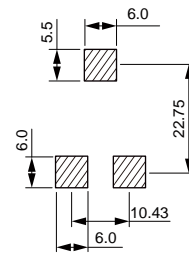
APPLICATION

- High current DC/DC convert
- LC filter

Dimensions: [mm]



Land Pattern: [mm]



Electrical Properties:

Part No	Inductance @100KHz/0.25V (μ H)	Tolerance	Saturation Current Max. (A)	Temperature Rise Current Max. (A)	DC Resistance Max. (m Ω)
THCE2818-2R2M	2.2	$\pm 20\%$	100	30	2.5
THCE2818-3R3M	3.3	$\pm 20\%$	93	30	2.5
THCE2818-4R7M	4.7	$\pm 20\%$	63	30	2.5
THCE2818-6R8M	6.8	$\pm 20\%$	46	30	2.5
THCE2818-100M	10	$\pm 20\%$	31	30	2.5
THCE2818-150M	15	$\pm 20\%$	21	30	2.5
THCE2818-220M	22	$\pm 20\%$	14	30	2.5
THCE2818-330M	33	$\pm 20\%$	8.7	30	2.5

Operating Temperature: -40°C to $+125^{\circ}\text{C}$

Temperature Rise Current: the actual value of DC current when the temperature rise is $T40^{\circ}\text{C}$

Saturation Current that will cause initial inductance to drop approximately 30%

Typical Electrical Characteristics:

