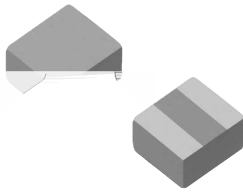


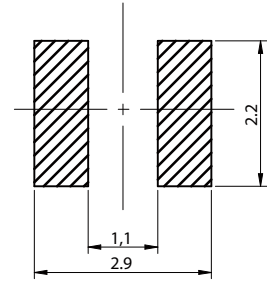
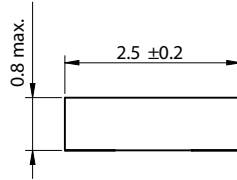
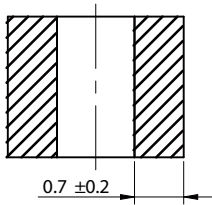
SPM Series



CHARACTERISTICS

-
-
-
-
-

°C ~125°C



Part No	Inductance (μH)	Tolerance	Temperature Rise Current Max. (A)	Saturation Current Max. (A)	DCR Max. (mΩ)	DCR Typ. (mΩ)
		±		5.8	87	
		±	1.6			
	2.2	±		2.6		252
		±		1.7		

°C

