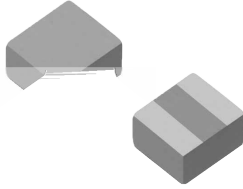
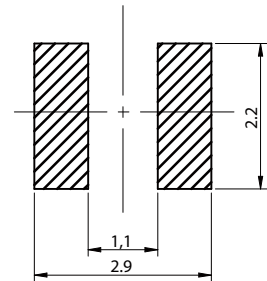
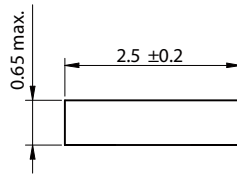
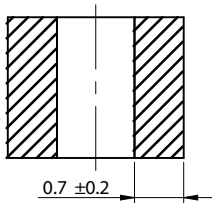


# SPM Series



## CHARACTERISTICS

- Large current, Low DC-resistance, High efficiency by magnetic metal powder
- Low acoustic noise and low leakage flux noise by shielded construction
- Operating temperature: -40°C ~ 125°C
- Quantity: 3000 pcs/reel
- AEC-Q200 qualified



Part No	Inductance	Tolerance	Temperature Rise Current Max.	Current Max.	DCR Max.	DCR Typ.
SPM2506-R47N	0.47	30%		4.9		76
SPM2506-1R0N	1.0	30%		3.5		163
SPM2506-2R2N		30%	0.8		377	328

Inductance is measured at 1MHz.

Temperature rise current: the actual value of DC current when the temperature rise is  $\geq 40^{\circ}\text{C}$

Saturation Current that will cause initial inductance to drop approximately 30%

