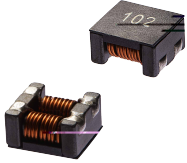


SCM Series

SMD Common Mode Inductor

Size 1211



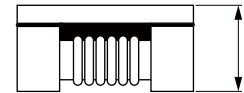
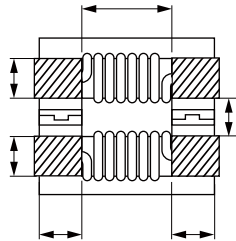
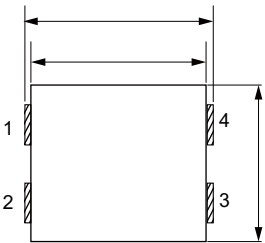
FEATURES

- Chip common mode filter for large current applications.
- Low profile design makes it optimal for surface mounting.
- Operating temperature -40~+125 °C
- Quantity:500 pcs

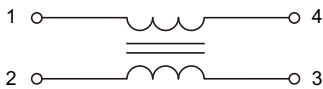
APPLICATIONS

- Power line noise countermeasure for various electronic equipment
- Noise countermeasure for adapter lines and battery lines or larger electronic equipment such as note PCs and word processors

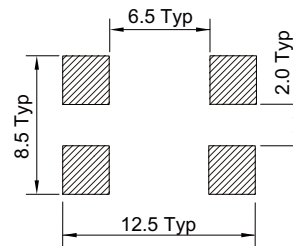
Dimensions: [mm]



Schematic:



Land Pattern:[mm]



Electrical Properties:

Part No	Impedance @ 100 MHz Min. (Ω)	Impedance @ 100 MHz Typ. (Ω)	DC Resistance Max. (mΩ)	Temperature Rise Current Max. (A)	Rated Volt Max. (V)	IR Min. (MΩ)



Part No	Impedance @ 100 MHz Min. (Ω)	Impedance @ 100 MHz Typ. (Ω)	DC Resistance Max. ($m\Omega$)	Temperature Rise Current Max. (A)	Rated Volt Max. (V)	IR Min. ($M\Omega$)

Typical Electrical Characteristics:

