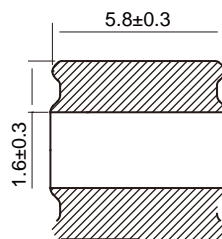
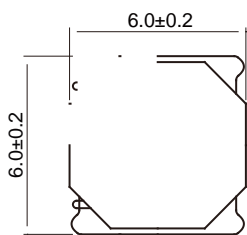


SMD Power Inductors For Automotive Size 6028

-
-

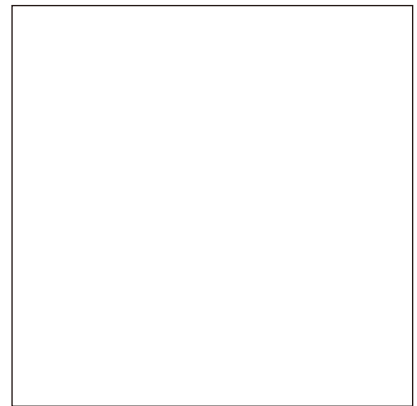
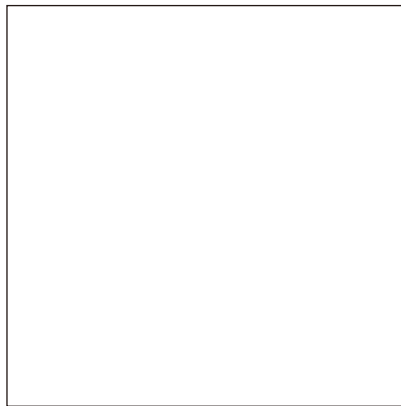
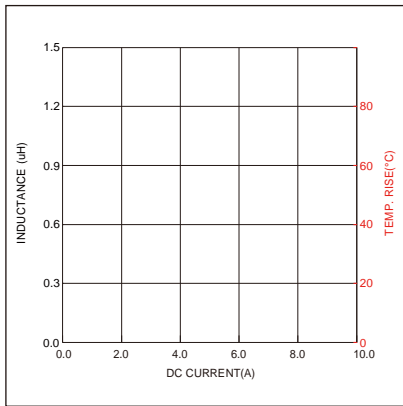
Dimensions: [mm]

Land Pattern: [mm]



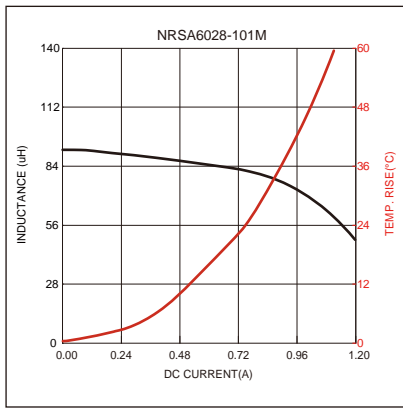
Electrical Properties:

Typical Electrical Characteristics:

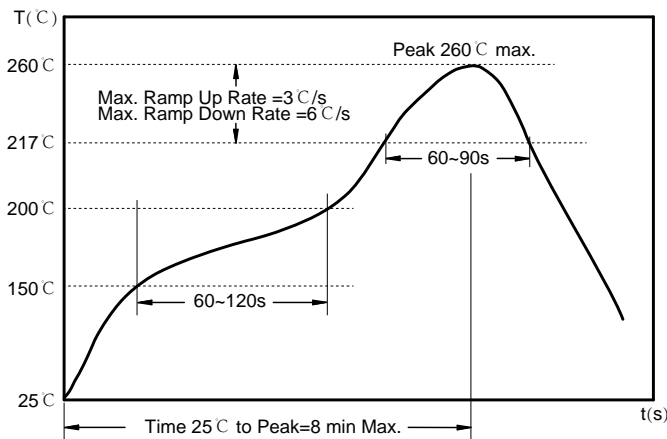


0.0 1.2 2.4 3.6 4.8 6.0

0.0 1.0 2.0 3.0 4.0 5.0



Soldering Reflow:



Preheat condition: 150 ~200 °C / 60~120 sec.

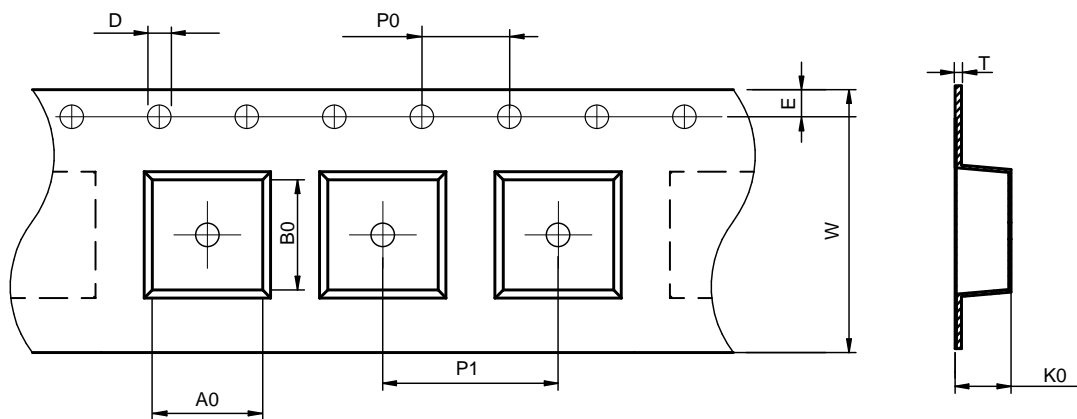
Allowed time above 217 °C : 60~90 sec.

Max temperature: 260 °C .

Allowed Reflow time: 2x max.

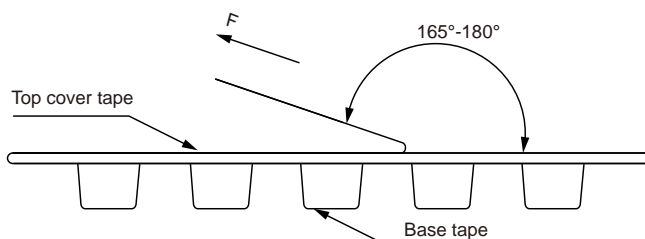
Packaging Information:

Tape Dimension :



Series	A0 (mm)	B0 (mm)	D (mm)	P0 (mm)	P1 (mm)	W (mm)	K0 (mm)	E (mm)	T (mm)
NRSA6028	6.4±0.1	6.4±0.1	1.5±0.1	4.0±0.1	8.0±0.1	16.0±0.3	3.3±0.1	1.75±0.1	0.40±0.03

Peel force of top cover tape:

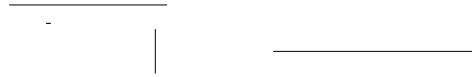


The peel force of top cover tape shall be between 0.3 to 1.17 N

Product Marking:

Marking	Printing (Inductance)
---------	-----------------------

Reel Dimension: [mm]



Packaging Quantity: