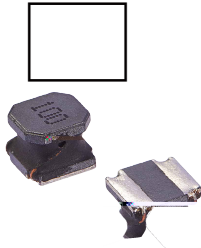


NRSA Series



FEATURES

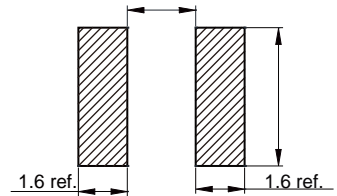
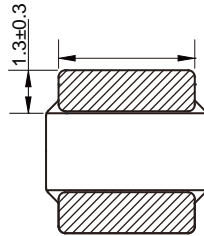
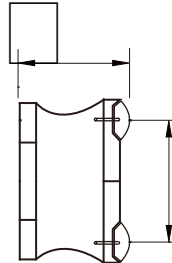
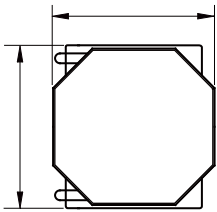
-
-
-
-
-
-
-

APPLICATION

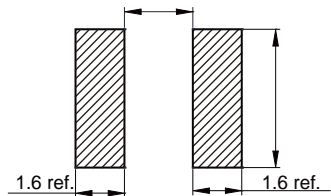
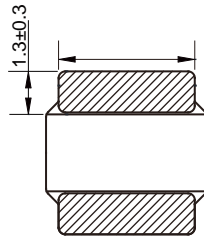
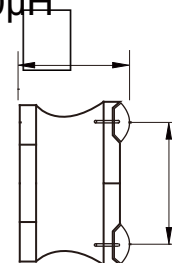
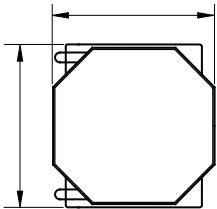
-

Dimensions: [mm]

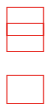
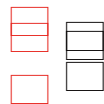
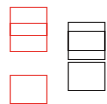
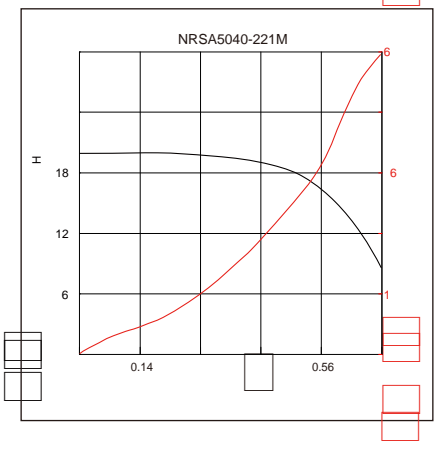
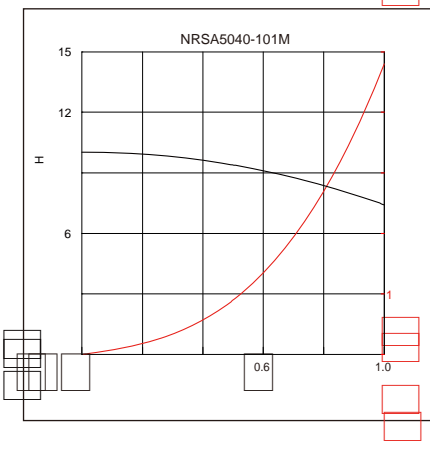
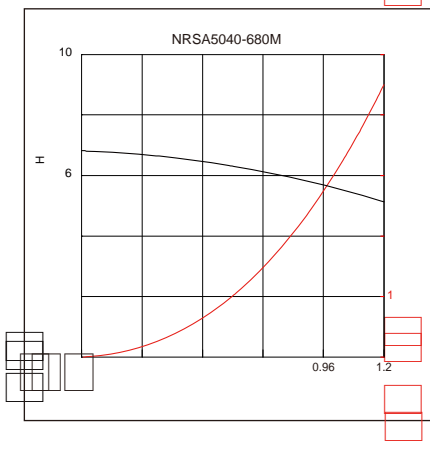
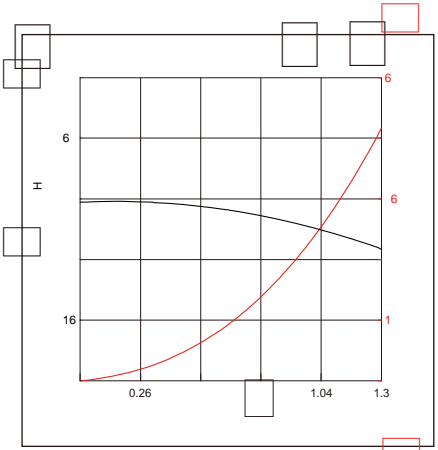
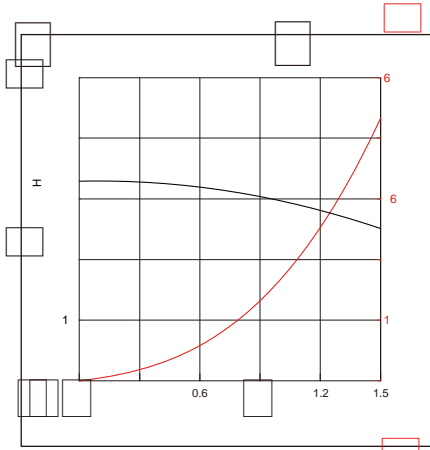
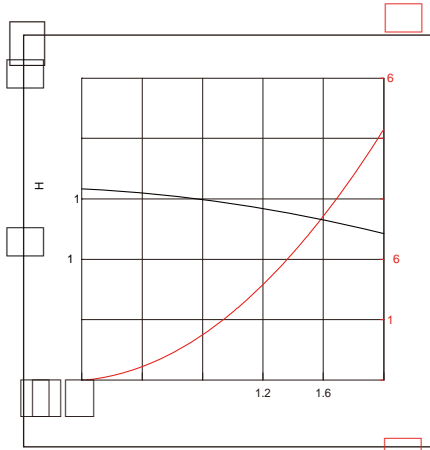
10 μ H



> 10 μ H



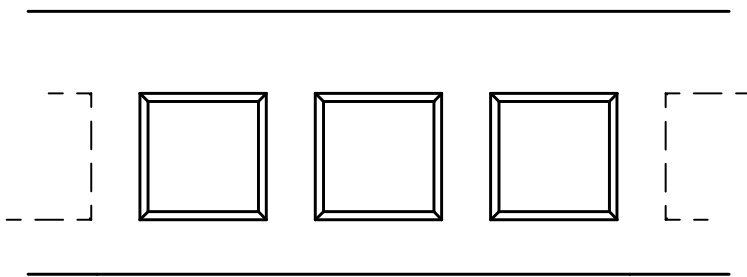
	(μ H)		Satura on		
			(A)	(A)	(m)
NRSA5040-1R0M	1.0	$\pm 20\%$	7.50	5.00	12
NRSA5040-1R5M	1.5	$\pm 20\%$	6.50	4.50	15
NRSA5040-2R2M	2.2	$\pm 20\%$	5.70	3.80	21
NRSA5040-3R3M	3.3	$\pm 20\%$	4.40	3.50	24
NRSA5040-4R7M	4.7	$\pm 20\%$	3.90	3.20	32
NRSA5040-6R8M	6.8	$\pm 20\%$	3.30	2.50	43
NRSA5040-8R2M	8.2	$\pm 20\%$	2.50	2.10	50
NRSA5040-100M	10	$\pm 20\%$	2.52	2.20	56



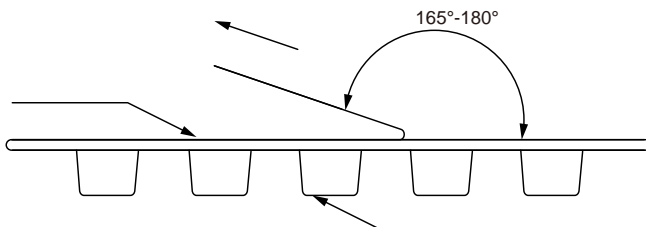
Preheat condition: 150 ~200 °C / 60~120 sec.

Allowed time above 217 °C : 60~90 sec.

Max temperature: 260 °C



					P1					
NRSA5040	5.3±0.1	5.3±0.1	1.5±0.1	4.0±0.1	8.0±0.1	12.0±0.3	4.2±0.1	1.75±0.1	0.40±0.05	



The peel force of top cover tape shall be between 0.3 to 1.17 N

