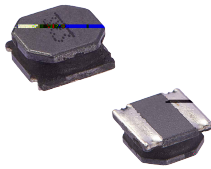


NRSA Series

SMD Power Inductors For Automotive

Size 4018B



FEATURES

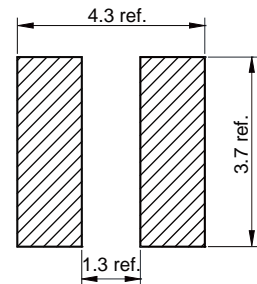
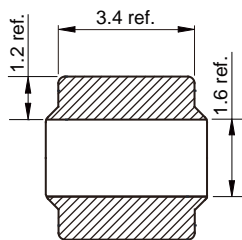
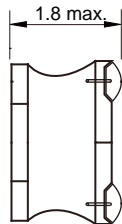
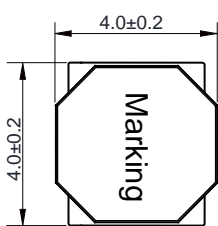
-
-
-
-
-
-
-

APPLICATION

-

Dimensions: [mm]

Land Pattern: [mm]



Electrical Properties:

	(μ H)		(A)	Satura on (A)	(m)

Saturation Current will cause L to drop approximately 30%

Temperature Rise Current: The actual value of DC current when the temperature rise is $\Delta T=40^{\circ}\text{C}$

Typical Electrical Characteristics:

