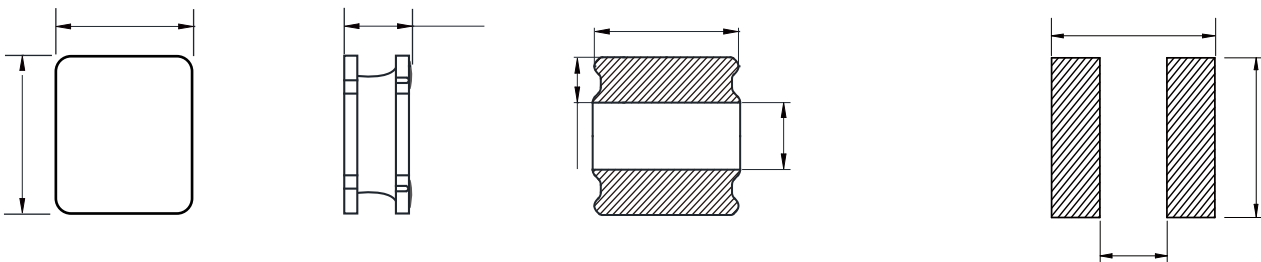
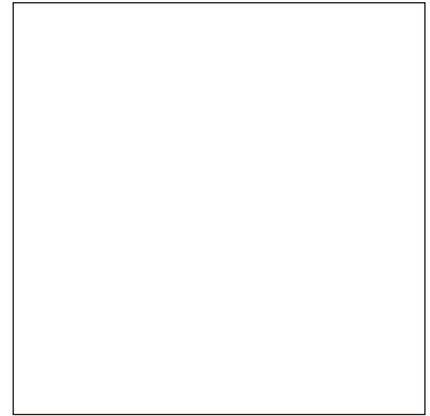
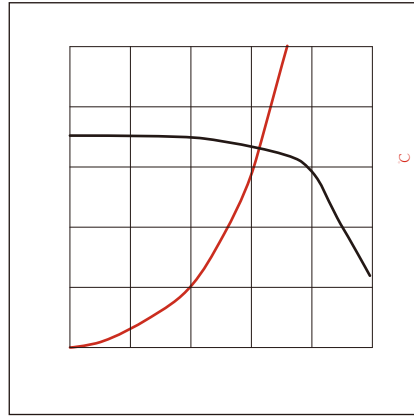
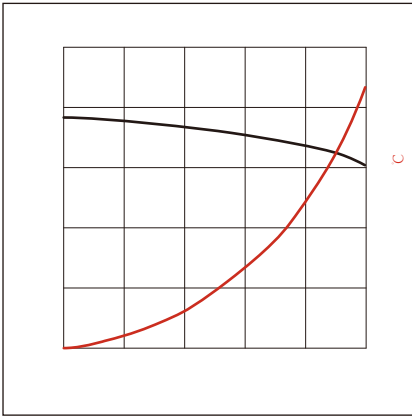


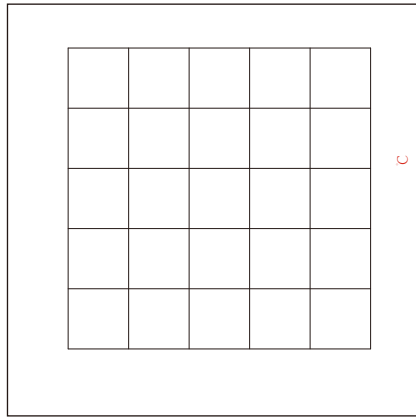
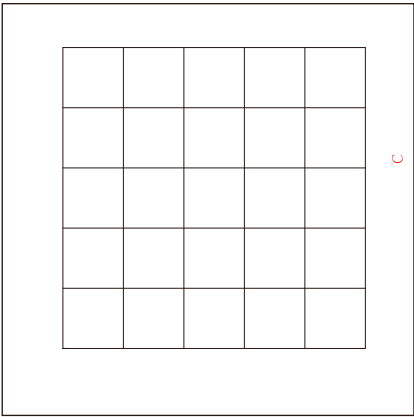
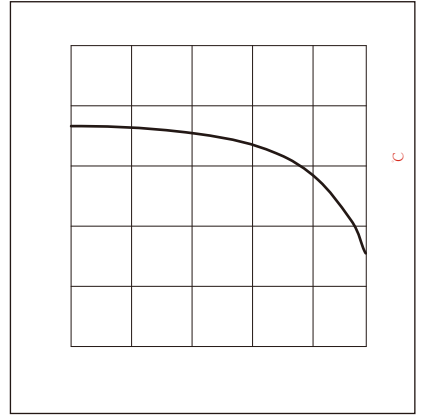
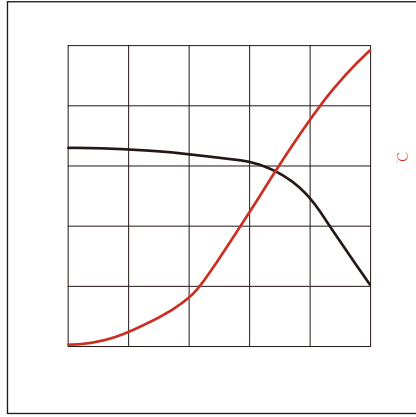
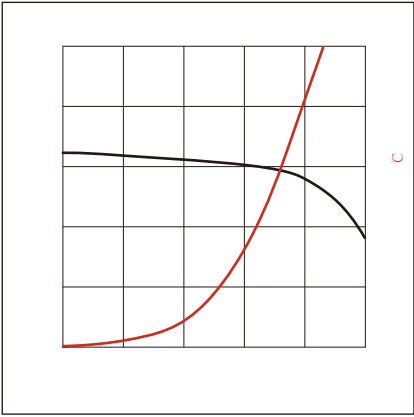


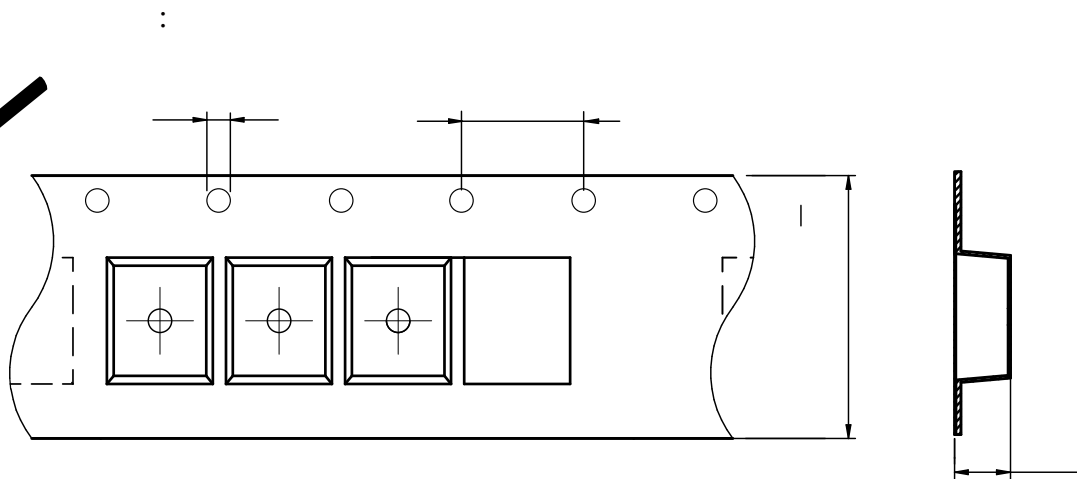
- Magnetic shield type wound inductor for power circuits using a ferrite magnetic material
  - High magnetic shield construction and compatible with high-density mounting.
  - Larger current and lower Rdc were achieved by optimizing the ferrite core figure.
  - Operating temperature: -55 to +125°C(including self-temperature rise)
  - AEC-Q200 qualified
  - Quantity: 2000pcs
- 
- Car navigation, car stereo and car accessories only



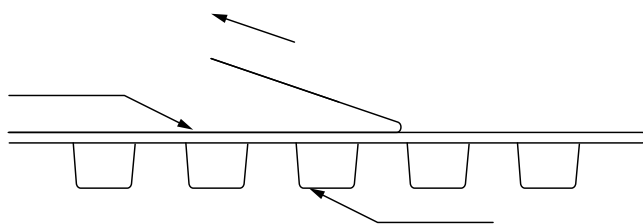
	( $\mu\text{H}$ )		(A)	Saturation (A)	(m $\Omega$ )
NRSA2520B-R24N	0.24	$\pm 30\%$	3.50	4.05	28
NRSA2520B-R33N	0.33	$\pm 30\%$	3.00	4.00	40
NRSA2520B-R47N	0.47	$\pm 30\%$	2.90	3.60	40
NRSA2520B-R56N	0.56	$\pm 30\%$	2.80	3.30	40
NRSA2520B-R68N	0.68	$\pm 30\%$	2.60	3.28	45
NRSA2520B-1R0M	1.00	$\pm 20\%$	2.40	2.45	60
NRSA2520B-1R5M	1.50	$\pm 20\%$	1.90	2.05	84
NRSA2520B-2R2M	2.20	$\pm 20\%$	1.80	1.90	110
NRSA2520B-3R3M	3.30	$\pm 20\%$	1.40	1.50	155
NRSA2520B-4R7M	4.70	$\pm 20\%$	1.20	1.35	228
NRSA2520B-6R8M	6.80	$\pm 20\%$	0.90	1.00	325
NRSA2520B-100M	10.0	$\pm 20\%$	0.75	0.79	480
NRSA2520B-150M	15.0	$\pm 20\%$	0.55	0.65	625
NRSA2520B-180M	18.0	$\pm 20\%$	0.50	0.55	1000
NRSA2520B-220M	22.0	$\pm 20\%$	0.45	0.50	1020
NRSA2520B-330M	33.0	$\pm 20\%$	0.37	0.38	1400
NRSA2520B-470M	47.0	$\pm 20\%$	0.29	0.30	2000





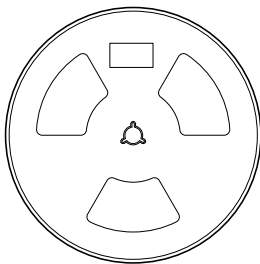
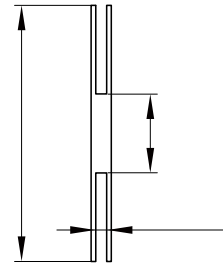
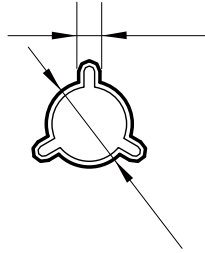
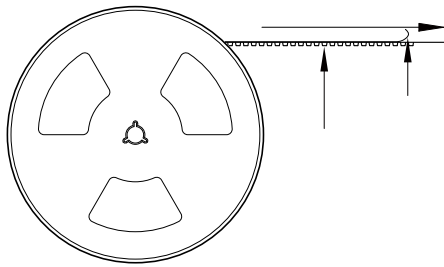


NRSA2520B	$2.4 \pm 0.1$	$3.0 \pm 0.1$	$1.5 \pm 0.1$	$4.0 \pm 0.1$	$4.0 \pm 0.1$	$8.0 \pm 0.1$	$1.4 \pm 0.1$	$1.75 \pm 0.1$	$0.20 \pm 0.05$

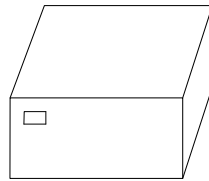


The peel force of top cover tape shall be between 0.2 to 0.58 N

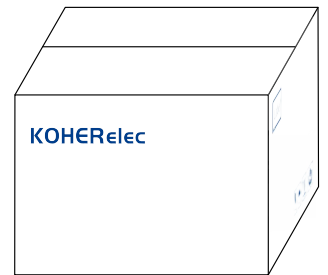
:



2000 Pcs/Reel



5 Reel /Inner box( 10K Pcs)



8 Inner box/Carton box(80K Pcs)

:

- 
- 
- 
- 
- 
- 
- 
- 
-