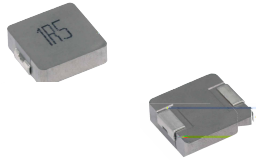


# MDE Series

## Molding Power Inductors

### Size 0518



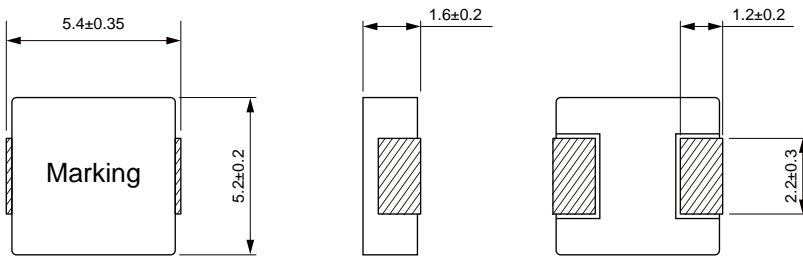
#### FEATURES

- High rated current
- Frequency up to 3 MHz
- 125 °C maximum total temperature operation
- Low core loss
- Ultra low buzz noise due to molding construction
- Halogen Free & ROHS compliant
- Operating temperature range - 55 °C to + 125 °C
- Quantity: 2000pcs

#### APPLICATION

- Laptops and PCs
- Switch and servers
- Base stations
- DC/DC converters
- Battery powered devices
- SSD modules

#### Dimensions: [mm]



#### Land Pattern: [mm]

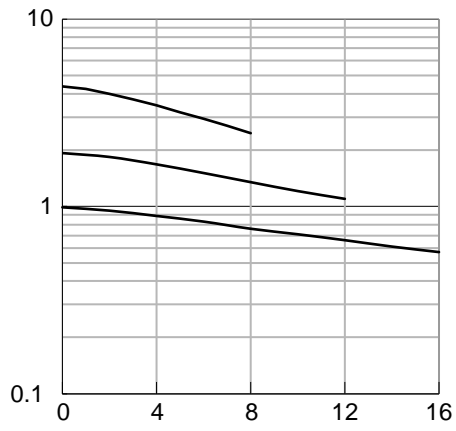
#### Electrical Properties:

Part No.	Inductance (mH)	DC Resistance (mΩ)	Rated Current (A)	Rated Power (W)	Temperature Range (°C)
MDE0518-04-004	0.47	400	9.00	10.8	125
MDE0518-04-004	0.75	420	9.00	15.0	125
MDE0518-04-004	1.00	430	11.0	11.2	125
MDE0518-04-004	1.50	430	2.00	3.00	125
MDE0518-04-004	2.20	430	3.50	4.50	125
MDE0518-04-004	3.30	430	5.00	5.50	125
MDE0518-04-004	4.70	430	6.50	4.20	125
MDE0518-04-004	6.80	430	7.20	3.40	125
MDE0518-04-004	10.0	430	7.50	3.00	125

*Inductance measured with tolerance, the actual inductance is approximately 80%.*  
*Temperature Rise Current: The actual value at 125 °C maximum total temperature range is 10%.*

## Typical Electrical Characteristics:

### Inductance vs DC Current Characteristics:



### Temperature Rise vs DC Current Characteristics:

