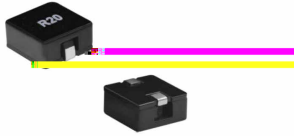


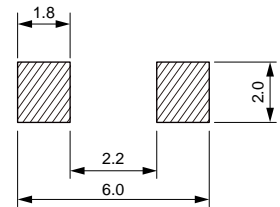
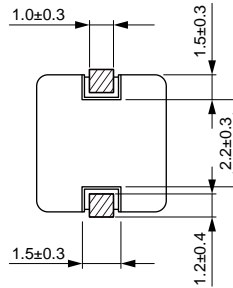
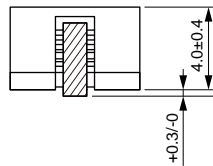
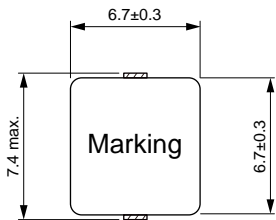
SMD Flat Wire High Current Inductor Size 5040



-
-
-
-
-
-
-
-

Dimensions: [mm]

Land Pattern: [mm]



Electrical Properties:

Part No	Inductance (μH)	Tolerance	Temperature Rise Current (A)	Satura on Current (A)	DC Resistance Typ. (m)	DC Resistance Max. (m)

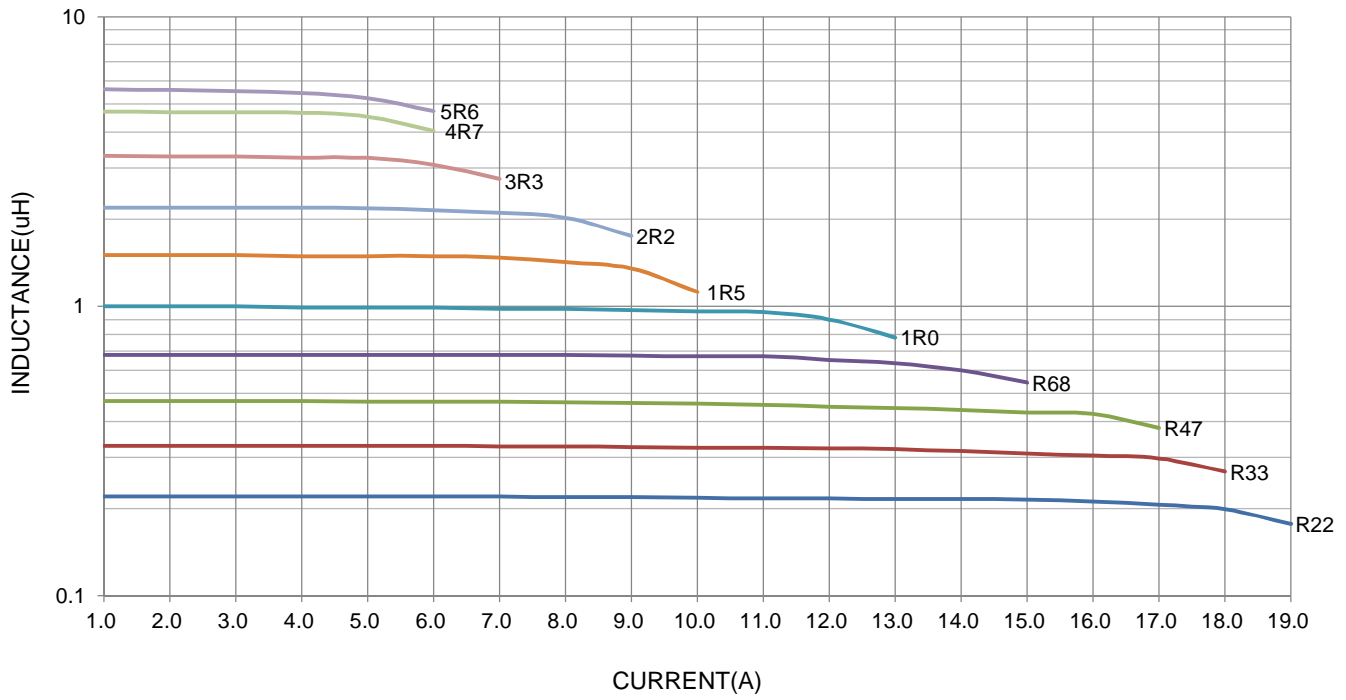
°C

°C

°C

Typical Electrical Characteristics:

Inductance vs Current Characteristics:



Temperature Rise vs Current Characteristics:

