

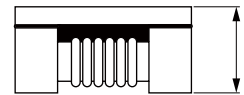
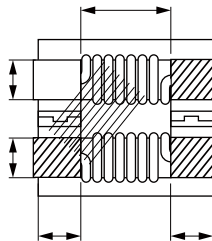
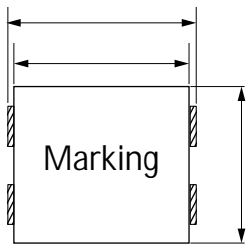
# Common Mode Filters For Automotive Power Line Size 1211



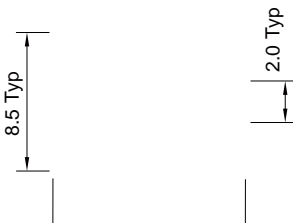
- High common mode impedance cause excellent noise suppression performance.
- 
- °C

- Measures against common mode noise in power lines various electronic devices

## Dimensions: [mm]

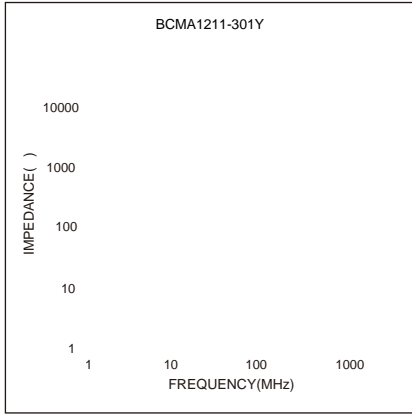


## Land Pattern: [mm]

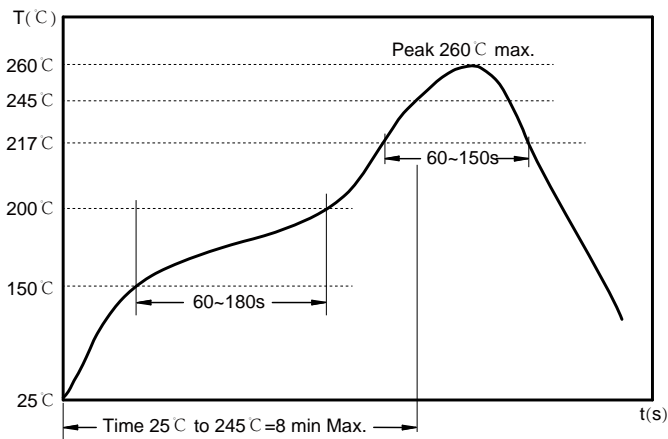


## Electrical Properties:


## Typical Electrical Characteristics:



## Soldering Reflow:



Preheat condition: 150 ~200 °C / 60~180 sec.

Allowed time above 217 °C : 60~150 sec.

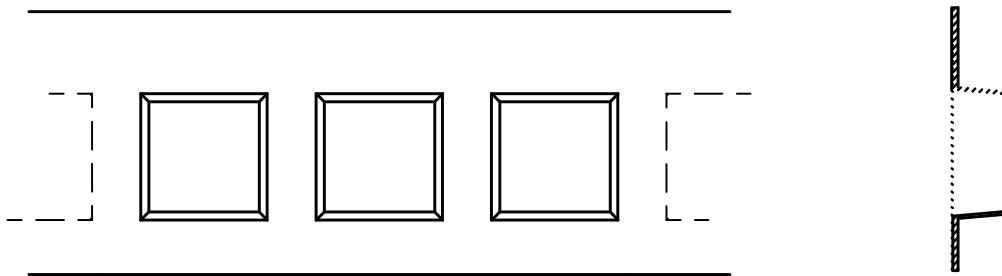
Max temperature: 260 °C .

Max time at max temperature: 10 sec.

Allowed Reflow time: 3x max.

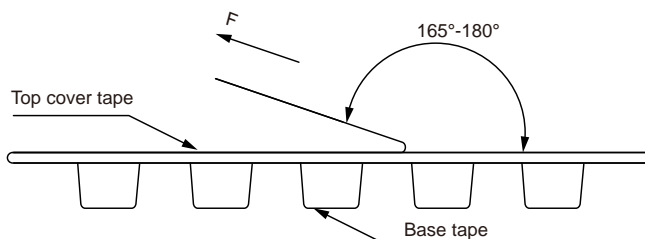
## Packaging Information:

### Tape Dimension :



Series	A0 (mm)	B0 (mm)	D (mm)	P0 (mm)	P1 (mm)	W (mm)	K0 (mm)	E (mm)	T (mm)
BCMA1211	11.3±0.1	13.0±0.1	1.5±0.1	4.0±0.1	16.0±0.1	24.0±0.3	6.6±0.1	1.75±0.1	0.40±0.05

### Peel force of top cover tape:



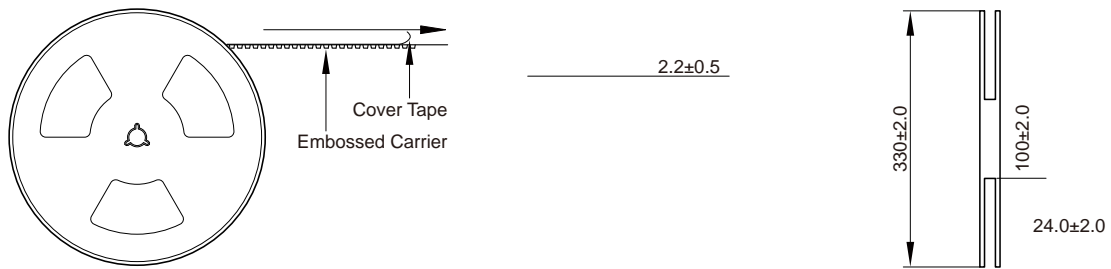
The peel force of top cover tape shall be between 0.10 to 1.17 N

### Product Marking:

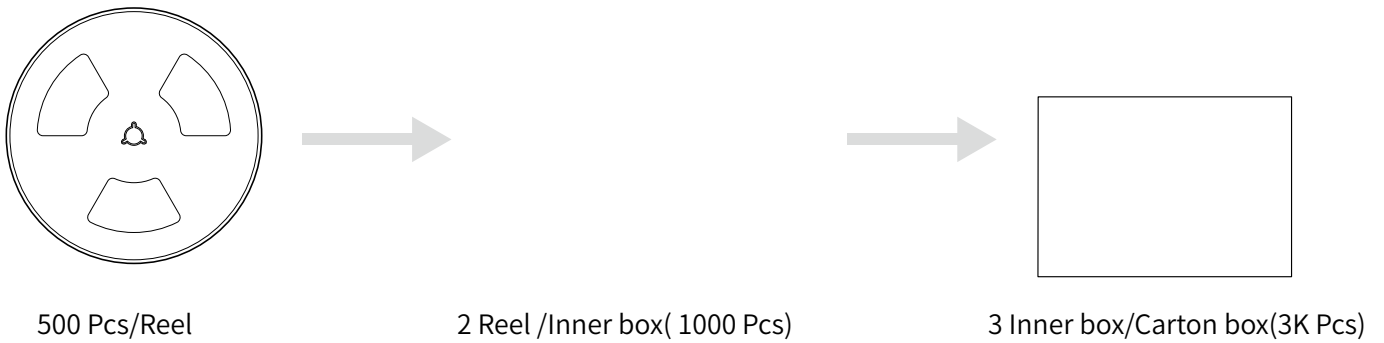
Marking	Printing (Impedance)
---------	----------------------



### Reel Dimension: [mm]



### Packaging Quantity:



### Cautions and Warnings:

Storage Conditions:

Operation Instructions: